



T: +357 22460240

F: +357 22480198

13A, Michalakopoulou str. 1075

Nicosia, P.O. Box 29656

1722, Cyprus

E: info@arimec.eu



ARIMEC

air-water-energy-fire protection

C5 FIRE PROTECTION CATALOGUE

- FIRE DAMPERS ● SMOKE DAMPERS ● PENETRATION SEALING ● PUTTY PADS
- FIRE GRILLES ● FIRE CURTAINS ● SMOKE VENTS- CONTROL SYSTEMS
- & PRESURIZATION SYSTEMS ● ATEX-SMOKE & HI TEMP. FANS

V080421

FIRE PROTECTION

IMPROVE YOUR LIVING CONDITIONS

Square Fire Damper



Round Fire Damper



Mortar



Putty Pads



Collars



Boards



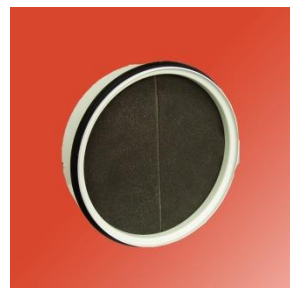
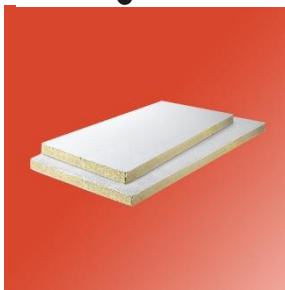
- Affordable Price
- Energy Saving
- Best Quality
- Modern Design

- Fire & Smoke Dampers
- Pressurization Units
- Penetration Sealing
- Putty Pads
- ATEX-Smoke & Hi temp. Fans

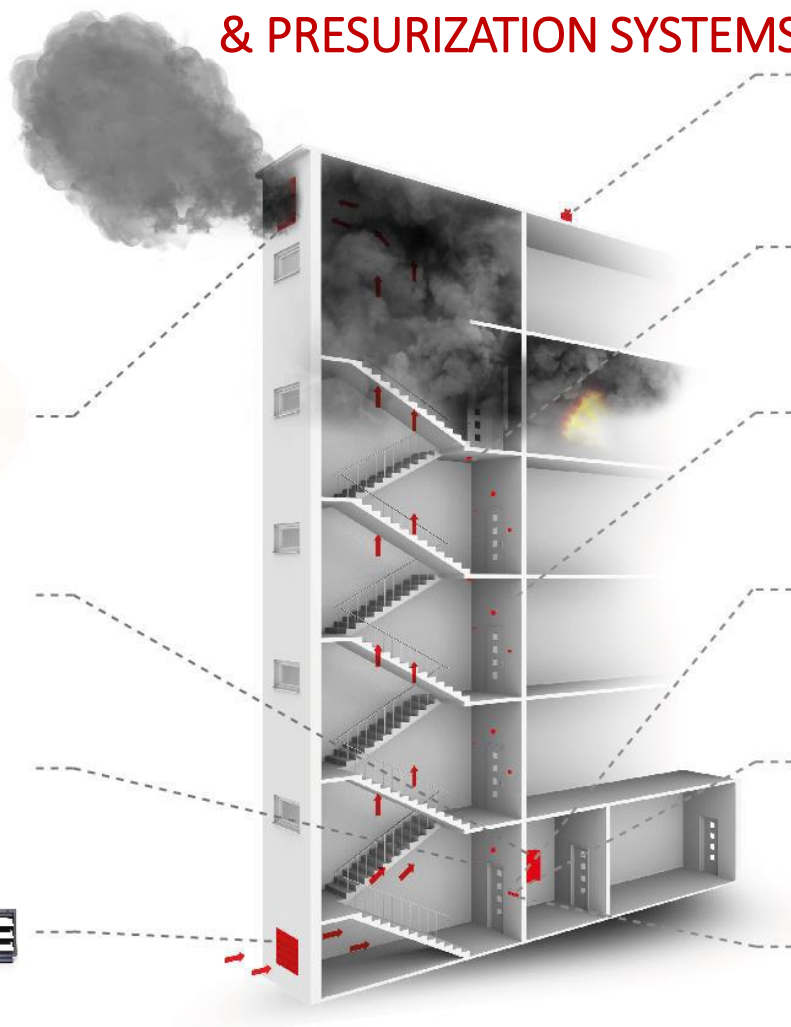
- Fire Grilles
- Fire Curtains
- Heat and Smoke Vents



Our Brand



SMOKE CONTROL SYSTEMS & PRESURIZATION SYSTEMS



iSWAY®-FC

Compact pressurization unit iSWAY-FC® Adaptive for smoke and heat control systems as a pressure differential kit

Druckdifferenzüberwachung iSWAY-FC® Adaptive zur Rauch- und Wärmefreihaltung

MAC-D Min

Digital pressure controller

Digitaler Druckregler

SRC

Multi-blade air damper

Jalousieklappe

CSUP-DIO

Digital input/output module of fire alarm control panel

Ein/Aus-Karte - Steuerungszentrale der Brandschutzanlagen

TS

Control panel

Schaltschrank

MSPU

Monitoring panel

Vorrichtung zur Überwachung des Betriebszustandes der Anlagen

CSUP-CP

Fire alarm central control panel

Zentraleinheit für Steuerungszentrale der Brandschutzanlagen

KWP-P-E

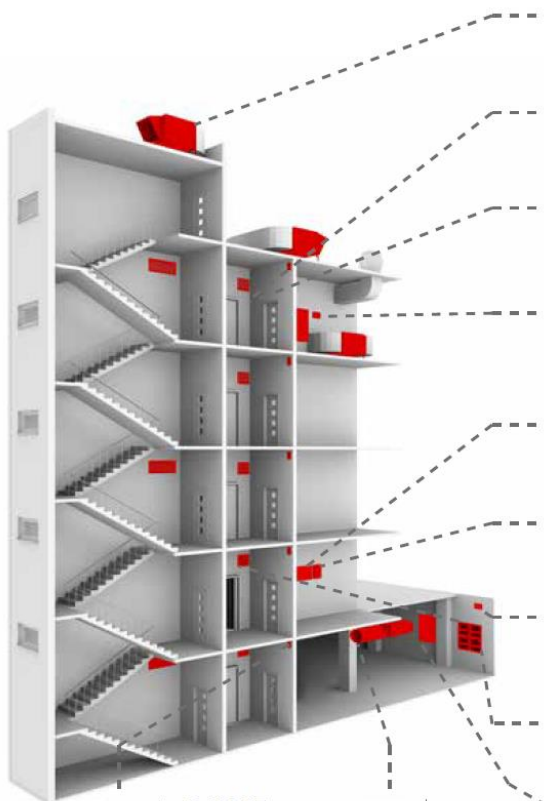
Smoke control damper

Entrauchungsklappe

ZUP

Fire system power supply unit

Netzteil für Brandschutzanlagen



P-MACF

Pressure sensor

Differenzdruck-Messumformer

SCF

Jet fan

Strahlventilator





**BROFER FIRE
DAMPER
BTT25**

- CE certified UNI EN 15650, UNI EN 13501-3 classified and tested according to UNI EN 1366/2.
- Sizes from 100mm up to 315mm
- EIS 120
- Casing galvanized steel with thermal cut. Blade in calcium silicate thermal release device calibrated standard at 72 °C.



**BROFER FIRE
DAMPER
BTT 30 EURO**

- CE certified UNI EN 15650, UNI EN 13501-3 classified and tested according to UNI EN 1366/2.
- Sizes from 200mm up to 800mm
- EIS 120
- Casing galvanized steel with thermal cut. Blade in calcium silicate thermal release device calibrated standard at 72 °C.



**BROFER FIRE
DAMPER
MDF 25 L**

- CE certified UNI EN 15650, UNI EN 13501-3 classified and tested according to UNI EN 1366/2.
- Sizes from 100x200mm to 800x600mm
- EIS 120
- Casing galvanized steel with thermal cut. Blade in calcium silicate thermal release device calibrated standard at 72 °C.



**BROFER FIRE
DAMPER
MDF 30 EURO**

- CE certified UNI EN 15650, UNI EN 13501-3 classified and tested according to UNI EN 1366/2.
- Sizes from 200x200mm to 1500x800mm
- EIS 120
- Casing galvanized steel with thermal cut. Blade in calcium silicate thermal release device calibrated standard at 72 °C.



**MANDIK Multi
Compartment
Smoke Damper MSD**

- Square dampers from 160x180mm to 1500x800mm
- EIS 120, actuating AA for multi Fire Compartment
- Damper actuating by electrical actuator for smoke dampers
- Damper actuating by electrical actuator with return spring and solenoid



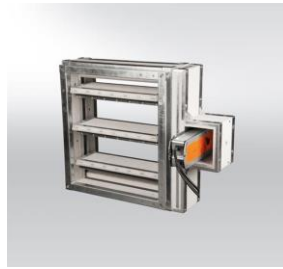
**MANDIK Fire
Damper CFDM**

- Round dampers 100, 125, 160, 200 mm
- CE certified acc. to EN15650
 - Fire resistance up to EIS 120
 - Maximum air speed through opened damper of 12 m/s and pressure difference 1 200 Pa



MANDIK Fire Damper FDMB

MANDIK Fire Damper BSK-J



MANDIK Fire Damper FDMA PM

MANDIK CIRCULAR FIRE DAMPER FDMB/R .01 Ø250



FDMB – The Damper in the HVAC equipment duct that prevents the spread of fire and combustion products from one fire segment to another by shutting off the airflow at the fixture points.

MANDIK Fire Damper FDMA



MANDIK Fire Damper FDMD



LINDAB Rectangular Fire Damper WKS25

Round dampers from \varnothing 100 to 200 mm

- Fire resistance up to EIS 120•
 - Damper actuating mechanical, or electrical
 - Maximum air speed through opened damper of 12 m/s and pressure difference 1 500 Pa
- Version: .01v1 --- Manual and thermal, mechanism outside the body



LINDAB Circular Fire Damper WH25



MANDIK Fire Damper FDMC



LINDAB Rectangular Fire Damper WK25

- Round dampers from \varnothing 100 to 400 mm
- Fire resistance up to EIS 60
- External casing leakage class C, Internal leakage class 2 acc. to EN 1751
- Damper actuating electrical
- Maximum air speed through opened damper of 12 m/s and

POLYSEAM PROTECTA FR PIPE WRAPS



PROTECTA® FR PIPE WRAP

Protecta® FR Pipe Wrap is a graphite material, within a flexible plastic sleeve that reacts to heat expanding to fill the void created by the melting plastic through-penetration. It can be used with plastic pipes (PVC-C, PVC-U, PP, PE, PE-HD, ABS and SAN+PVC), bundles of plastic pipes – with or without cables, and metal pipes with penetrating combustible insulation.

Fitted by wrapping around the through-penetration and securing with the adhesive tape, then casting into the wall or floor construction fitted in either Protecta® FR Board or Protecta® EX Mortar.

POLYSEAM PROTECTA FR PIPE COLLARS



PROTECTA® FR COLLAR

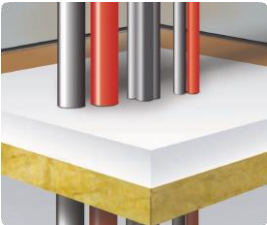
Protecta® FR Collars consist of a two part, coated, circular steel shell that fits around plastic pipes (PVC-C, PVC-U, PP, PE, PE-HD, ABS and SAN+PVC); plastic pipe bundles – with or without cables, and bundles of cables. The collars have a secure and simple locking device.

FAST REACTING TECHNOLOGY

Protecta® FR Collar is a perfect solution for core drilled pipe and cable bundle penetration holes. The reinforced steel collar exterior is designed to take the pressures of the intumescent's reaction, which expands to fill and crush down the melting pipe. This then fills the void that would otherwise allow the passage of fire and prevent the passage of unseen toxic gasses.



POLYSEAM PROTECTA EX MORTAR



PROTECTA® EX MORTAR

Protecta® EX Mortar is a dry white powder consisting of inorganic compounds and perlite. When mixed with water the compounds form a highly thermal insulating fire seal which prevents the spread of fire and smoke through openings in fire rated walls and floors. This includes openings formed to accommodate building service penetrations.

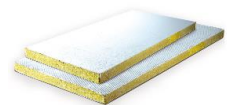
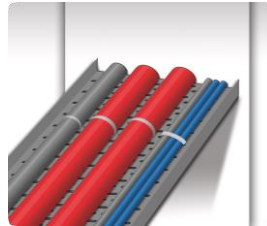
LOAD BEARING WITHOUT REINFORCEMENT

Protecta® EX Mortar has great strength and adhesion properties with unparalleled impact testing and the ability to withstand loads of up to 15kN concentrated load and 500Nm serviceability. It is not to be confused with normal mortars which shrink on curing and are therefore not suitable for reinstating fire separating floor installations.

FASTER INSTALLATION

Protecta® EX Mortar is a high performance load bearing compound, tested with a vast array of penetrations whether through wall or floor, from depths of as little as 50mm upward. This fast curing, workable, self-leveling mortar is one of the best of its kind, providing safe usable working areas in a fraction of the time of its competitors.

POLYSEAM PROTECTA FR BOARD



PROTECTA® FR BOARD

Protecta® FR Board has been designed to maintain the fire resistance of separating walls/floors where they are breached by single or multiple building services. It consists of a rigid stone wool core, sealed with Protecta® FR Coating on 1 or both faces. The coating provides an important barrier to the passage of fire, smoke & hot gases through the thickness of the board, reducing the rate at which the stone wool core heats up. This provides a better heat sink for the dissipation of conducted heat through penetrations with higher thermal conductivity.

FASTER INSTALLATION

Protecta® FR Board is a high performance product carrying a classification code up to EI 240 in a wide range of application, making it unique and advanced in a constantly challenging sector. Protecta FR Board is also tested in single and double board applications both within solid construction walls, floors and dry lining scenarios. Single board testing has made for faster and more cost effective installation.

POLYSEAM FR ACRYLIC SEALANT



PROTECTA® FR ACRYLIC

Protecta® FR Acrylic is widely used in markets across Europe. Its exceptional certification across a wide range of fire-stopping applications makes it popular with installers, reducing the need to carry different mastics. Used in combination with Protecta® FR Board establishes it as a unique fire rated FR Acrylic in the PFP market place.

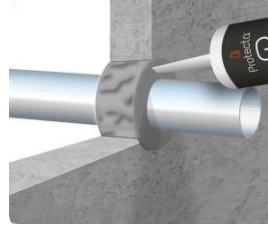
Protecta® FR Acrylic has been tested with various types of penetrations through walls, ceilings and floor constructions. Its intumescent property closes any gaps left by burnt away penetrations and also has a shelf life of 18 months.

SOUND RESISTANT

Protecta® FR Acrylic is designed to resist not just the passage of fire but also an ever more prevalent issue of sound insulation and attenuation. Using Protecta FR Acrylic Sealant, reductions of up to 62dB can be achieved with only a 12mm depth single sided, higher than most acoustic sealants in the marketplace today.



POLYSEAM FR GRAPHITE SEALANT



PROTECTA® FR GRAPHITE

Protecta® FR Graphite is a waterbased, fire classified sealing compound which contains a high concentration of heat expanding graphite material. It also has a shelf life of 18 months.

Protecta® FR Graphite is a high specification formulation designed to prevent the spread of fire, smoke and gases through openings in fire rated walls and floors. Protecta® FR Graphite expands when it is subjected to fire and closes openings around penetrations when any combustible or low temperature melting materials have burnt away. Protecta® FR Graphite is designed to fire seal difficult services which traditional fire rated mastics do not achieve such as large plastic pipes.

FIRE AND SOUND RESISTANT

Protecta® FR Graphite is a pressure exerting, aperture closer sealant designed to expand on contact of fire/ excessive heat. It is resistant not just to the passage of fire, but also the ever more prevalent issue of sound insulation and attenuation. Using Protecta FR Graphite, reductions of up to 53dB can be achieved with only a 25mm depth within single sided solid construction substrate, this is higher than most acoustic sealants in the marketplace today.

POLYSEAM PROTECTA FR PUTTY PADS



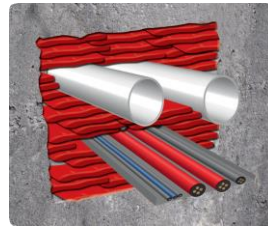
PROTECTA® FR PUTTY PADS

Protecta® FR Putty Pads are an easy to apply fire and sound rated sealant supplied as a non-setting putty. The pad is hand workable, re-useable and re-serviceable due to its non-setting properties.

When electrical sockets and switches are installed in dry lining partitions, the original fire rating of the partition is compromised. Fitting Protecta FR Putty Pads will reinstate the fire rating of the partition for up to two hours (depending on the partition fire rating) and prevent the passage of smoke and flames in a fire, and sound and air movement during service life, through the electrical socket, into the cavity.

Protecta FR Putty Pads are shaped for use on both single and double electrical sockets installations in dry lining walls. The pads are supplied in a cross shape for internal installation in a socket and in a rectangular shape for application on the rear of the socket.

POLYSEAM PROTECTA FR PILLOWS



PROTECTA® FR PILLOWS

Protecta® FR Pillows are designed & used as a temporary or permanent fire seal for complex cable penetrations in fire rated vertical separating elements. The cables can be supported by either perforated or non-perforated cable trays or cable ladders & comprise a range of different cable types with different cross section conductors and different thermoplastic insulation sheathing, both internal and external.

Protecta® FR Pillows offer a particularly versatile fire resistance solution where cables and cable support systems are subject to frequent upgrading without the need for time consuming permanent installations.

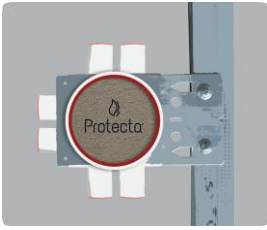
FAST AND EFFECTIVE

Protecta® FR Pillows are filled with organic fillers and intumescent additives in a waterproof glass cloth bag on the outside. This is an ideal product to create a temporary or permanent fire barrier around all types of services to prevent the passage of fire through a compartment wall or floor, especially suitable where services are continuously being changed or replaced.

EASY INSTALLATION

During a fire, Protecta® FR Pillow intumescent expands and locks itself into place, completely surrounding the penetrants, stopping smoke, fire and toxic gases from spreading into another room or floor. They are easy to install and great for retrofit projects, simply remove and replace pillows as needed.

POLYSEAM PROTECTA FR GRAPHITE PLATES



PROTECTA® FR GRAPHITE PLATE

Protecta® FR Graphite Plate is a preformed self-adhesive intumescent plate, used to reinstate the fire resistance performance of flexible wall constructions when punctured with plastic wall boxes. It is used where the walls have been provided with apertures for the penetration of conduits and cables into socket boxes, on one or both sides of the wall.

The graphite plate immediately reacts to fire through the heat and automatically expands and fills up the box, preventing fire and smoke from passing through. Fitting Protecta® FR Graphite Plate will reinstate the fire resistance performance of flexible wall constructions for at least 60 minutes. It also prevents the passage of smoke and fire through the electrical conduits between socket boxes.

Protecta® FR Graphite Plate is available in both circular and square plates for the following wall boxes:

Square plates for wall boxes:

- ELKO 3012 S57/100
- ELKO 4040 S57/100
- SCHNEIDER IMT36016 BR6ST
- SCHNEIDER IMT36006 BR6ST

Pad fits in the square recess in the base of the box and is 45mm x 45mm.

Circle plates for wall box:

- ELKO 45/6

Pad fits in the round recess in the base of the box and is Ø59mm in diameter.

PROTECTA PUTTY PADS FOR PIPES



Density	1.55 g/ml
Application temperature	+4 °C to +40 °C
Service temperature	-70 °C to +120 °C
Thickness	4 mm
Storage	Stored in temperatures between 5°C and 30°C
Working life	Under normal conditions; 25 years +
Colour	Red
Form	Supplied in kits including two pads. One in size 175x65mm and one Ø50/25mm
Packaging	4 kits per box

Gives wall boxes for tap water a high fire resistance in dry lining partitions.

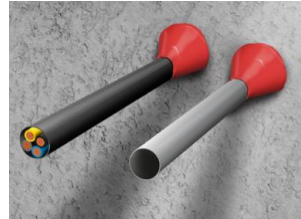
- ☑ Stops penetration of both cold and hot smoke.
- ☑ Self-adhesive and very easy to apply without tools.
- ☑ Can be used in wall boxes on both sides of the wall without the need for spacing between installations for safety.
- ☑ Can be used in single and double wall boxes (cold and hot water).
- ☑ Unaffected by moisture; can be used in wet rooms.
- ☑ Never hardens and ensures a tight fit.
- ☑ Can be reshaped to other sizes if necessary.
- ☑ Provides excellent sound insulation.
- ☑ Environment- and user friendly; contains no solvents or VOC's.
- ☑ Contains a low pressure intumescent for optimal fire protection.
- ☑ Working life of at least 25 years.

Protecta® Service Transit



Certified for PVC-U, PVC-C, PE, LDPE, MDPE, HDPE, ABS, SAN+PVC and PP pipes plus all kinds of cables up to a certain diameter

FR PUTTY CORD



PROTECTA® FR PUTTY CORD

Protecta FR Putty Cord is an easy to apply fire rated putty supplied as a non-setting cord. Fitting the putty cords will reinstate the fire rating of the partition and prevent the passage of smoke and flames in a fire and sound and air movement during service life.

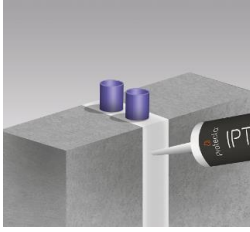
The putty cord is designed to be easily fitted around service penetrations where the gap around the services is very small, or there is no gaps at all so a conventional fire rated sealant is impossible or difficult to fit due to the required depth and backing material. The putty cords are fitted covering the gap around the services and does not need to fill the gap to the required depth.

KEY FEATURES

- Makes it possible to fire seal without any minimum annular width around services.
- Installation is very simple and quick; fitted in a minute.
- Gives service penetrations a high fire resistance in dry lining partitions and masonry or concrete walls.
- Stops penetration of both cold and hot smoke.
- Self-adhesive and very easy to apply without tools.
- Unaffected by moisture; can be used in wet rooms.
- Never hardens and ensures a tight fit.
- Can be reshaped to other sizes if necessary.
- Provides excellent sound insulation.
- Environment- and user friendly; contains no solvents or VOC's.
- Contains a low pressure intumescent for optimal fire protection.
- Working life of at least 25 years.

Pno.	Size	Qty/Box	Intended Use
P249	Ø40 x 150mm	30	Drywalls or walls of masonry and concrete ≈ 75mm thick
P250	Ø63 x 150mm	25	
P251	Ø90 x 150mm	12	
P252	Ø110 x 150mm	9	
P253	Ø40 x 250mm	30	Drywalls or walls of masonry and concrete ≈ 100mm thick or concrete floors ≈ 150mm thick
P254	Ø63 x 250mm	25	
P255	Ø90 x 250mm	12	
P256	Ø110 x 250mm	9	
P257	Ø40 x 400mm	30	Drywalls or walls of masonry and concrete or concrete floors ≈ 250mm thick
P258	Ø63 x 400mm	25	
P259	Ø90 x 400mm	12	
P260	Ø110 x 400mm	9	

FR IPT



PROTECTA® FR IPT

FR IPT is a high performance fire rated sealant, professional quality, one part ready to use sealant and adhesive.

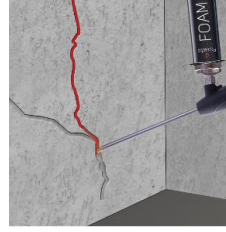
Based on an innovative new Inert Polymer Technology it is suitable for a wide variety of building trade applications, Fire Protection, Decorating, Flooring, Glazing, Joinery, Plumbing, Roofing and Tiling and out-performs conventional silicone, MSP, butyl and acrylic based products as a sealant and adhesive.

Protecta FR IPT is designed for sealing joints, voids/irregular holes in walls, partitions and other structures, resulting in an airtight and watertight seal. It also provides primerless sealing and bonding on a wide range of substrates including:
Ceramic, Plaster
Plastics, Masonry
Wood, Stone
Metals

KEY FEATURES

- Internal sealing around doors and windows
- Sealing where air quality for health is important
- Sanitary applications including showers
- Sealing of gaps around fitted furniture and worktops
- Sealing around flooring
- Fire resistant sealing
- Radon resistant sealing
- Decorating caulking and sealing
- Air and sound sealing

FR FOAM



PROTECTA® FR FOAM

Protecta FR Foam is a fire classified construction foam that has particularly good acoustic properties.

The foam satisfies the fire resistance requirement of 240 minutes at a depth of 20 cm, and is suited for quick and inexpensive sealing between concrete elements, Leca and similar where top finish is not required.

The sound resistance classification is 58dB at a depth of 10 cm, which may solve some problems in the construction industry.

KEY FEATURES

- Sealing for window fittings
- Sealing for door fittings
- Filling free spaces, cracks, gaps and pipe penetrations
- Sealing roof, wall and floor joints.
- Thermal insulation
- Acoustic insulation

MINERAL FIBRE BIO



PROTECTA® MINERAL FIBRE BIO

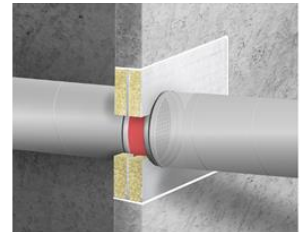
Protecta Mineral Fibre Bio is made from special alkaline earth silicate (AES) fibres that have been uniquely engineered to offer advantages in high temperature insulation applications. These wool blanket products are lightweight, have low thermal conductivity, low heat storage and excellent resistance to thermal shock.

It is also suitable for use in a wide range of high temperature applications such as furnace lining and blast furnace operation. It can also be used in fire-stopping applications as an easy-to-install, thermal backing material for fire protection sealants. Protecta Mineral Fibre Bio is user friendly and considered a superior alternative to stonewool (rockwool) as it is easier to shape and fit and its high temperature endurance.

KEY FEATURES

- Excellent chemical stability
- Excellent thermal stability
- Excellent tensile strength
- Low thermal conductivity
- Low heat capacity
- Excellent insulation properties
- Good sound insulation
- Flexible and easy to adapt for most applications
- Does not react in contact with other materials
- Fully inert, no dangerous chemicals
- User friendly
- Easy to shape and fit

FR DAMPER



PROTECTA® FR DAMPER

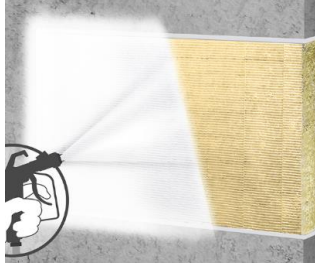
Protecta FR Damper are designed to fire seal ventilation ducts passing through fire rated walls and floors. The product consists of a damper that closes if a fire starts with use of a heat expanding graphite material, which are placed on steel fins inside the damper, and is secured with local surrounding stonewool on one or both sides of the damper

The aperture surrounding the damper is fire sealed with Protecta FR Board in walls and Protecta EX Mortar in floors. You can either install the damper inside a fire seal or then attach the ducts, or you can install the damper during the installation of the ducts and fire seal the surrounding openings afterwards. The aperture where the ducts pass through can include one duct or multiple ducts. You can also penetrate other technical services in the same aperture, as cables, cable ladders and pipes.

KEY FEATURES

- Maintenance free and no electrical connections necessary.
- The same damper can be installed in both walls and floors.
- It seals against penetration of fire and smoke both surrounding and inside the ventilation duct.
- Closes in the area where the fire is located but not elsewhere so the ventilation system can be used to extract smoke from areas that are not on fire.
- Keeps the temperature in the duct network lower than 120°C and will therefore protect fans and sensitive units in the system.
- Insulation of ducts is not necessary.
- Service life of more than 50 years; the damper will last the same life cycle as the ventilation system.
- The dampers are designed to fit standard ducting equipment so that the ducting system installer can easily fit the dampers.

FR COATING 8 LITRE



PROTECTA® FR COATING 8 LITRE

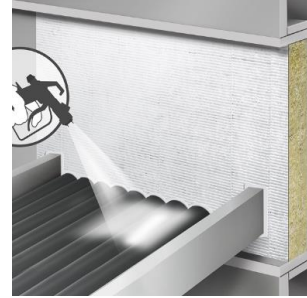
Protecta FR Coating spray grade, is an ablative sealant coating designed to enhance, seal and fire protect mineral fibres. It is based on a durable polymer system with inert fillers, non-halogenated fire retardants and a preservative to resist microbial attack.

Protecta FR Coating is designed to be applied via spraying directly onto mineral fibres. The coating dries to give a sound, flexible white surface finish. During installation of mineral fibres, the cured sealant coating reduces delamination and increases surface stability for adhesive and fixing sealant application.

KEY FEATURES

- Easy to retrofit additional building services after installation.
- Non Toxic & Emission Free not harmful to you.
- Permanently flexible - will accommodate movements during fire and smaller movements in the construction it has been fitted within.
- Suitable for most surfaces, including concrete, bricks, masonry, steel, wood, gypsum, glass, plastics and most non-porous surfaces.
- May be used in unlimited lengths in walls with heights up to 1200mm and in floors with widths up to 120 mm.
- May be installed in gypsum walls without framing around the opening.
- Halogen free with added fungicides.
- Once fully cured, the coated board resists water and frost.

SERVICE COATING FR-1



PROTECTA® SERVICE COATING FR-1

Protecta Service Coating FR-1 is a water-based intumescent coating for the fire protection of cables in a service installation. The coating upgrades the insulation and integrity of the installation. The coating is non-toxic, emission free, durable and can be applied in one coat saving time and money.

Protecta Service Coating FR-1 provides excellent fire resistance, making combustible cables fire-proof. It can be used in combination with Protecta FR Board as a coatback on services to achieve a higher fire classification.

KEY FEATURES

- Non-toxic and emission free with near zero VOC and best possible emission classifications.
- Durable, robust and designed to last, can be cleaned with a damp cloth without the risk of washing off the paint.
- No topcoat needed, excellent coverage by brush or spray and can be applied in one-coat saving paint and especially application time.
- The durability of the coating is expected to be at least 12 years
- Halogen free with added preservatives that resist bacteria and fungal growth providing extra protection to health in addition to the non-harmful emissions.

INTERIOR PAINT FR-1



PROTECTA® INTERIOR PAINT FR-1

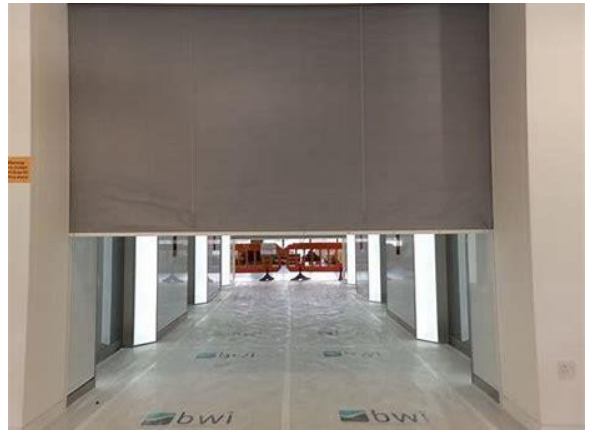
Protecta Interior Paint FR-1 is a decorative paint with special properties to protect against spread of fire and protect people's health against harmful chemicals. It is a hard-wearing interior acrylic paint, formulated to the highest specification and offering unsurpassed intensity of colour.

All colours are water-based and provide a smooth, rich and non-reflective finish. It is perfect for a contemporary look and to hide surface imperfections. Protecta Interior Paint FR-1 is a one-layer system that normally requires no primer, no top coat, is easy to use and very easy to clean up.

KEY FEATURES

- Fire Resistant protecting your homes, schools, hospitals etc.
- Non Toxic & Emission Free not harmful to you.
- Durable robust and designed to last.
- Excellent Coverage saving time and money.

FIRE CURTAINS from LBS UK



**ROLLER SHUTTERS
FIRE SHUTTERS
SECURITY GRILLES**

A complete range of fire protection products including fire-resistant shutters, fire & smoke curtains and steel doors. The perfect fire protection solution for a variety of applications, including industrial, commercial and retail properties

SMAY PRODUCT RANGE

Smoke and heat control systems (EN 12101 series)

FIRE DAMPERS



SMOKE DAMPERS



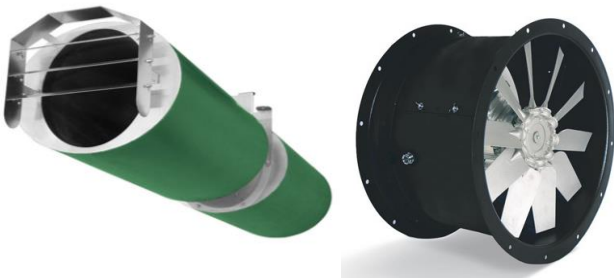
FIRE DEVICES CONTROL PANEL



CDH-FRESH AIR COMPENSATION LOUVRE



SMOKE EXTRACTION FANS



ATEX DAMPERS



SMOKE CONTROL STEEL DUCTS



SAFETY WAY – PRESSURE DIFFERENTIAL SYSTEM



Features: • meets EN 12101-6 requirements

• precise electronic pressure difference control

• with control panel TSS for continuous status monitoring

• automatic self-control every 24h with auto-log

• with IR heater to protect against ice and snow • compact construction

PRESSURIZATION SYSTEM iSWAY-FC®

iSWAY-FC® -Adaptive compact pressurization unit is a kit of components enclosed in one casing capable to produce and maintain desired pressure differential between the protected space and reference



SCD – SMOKE EXHAUST VENT

Features: • meets EN 12101-2 requirements

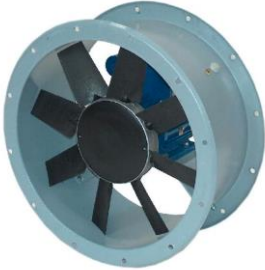
• classified up to SL1000, T(-25), WL1500, B300 and Re1000

• pneumatical or electrical control • comfort function –ventilation

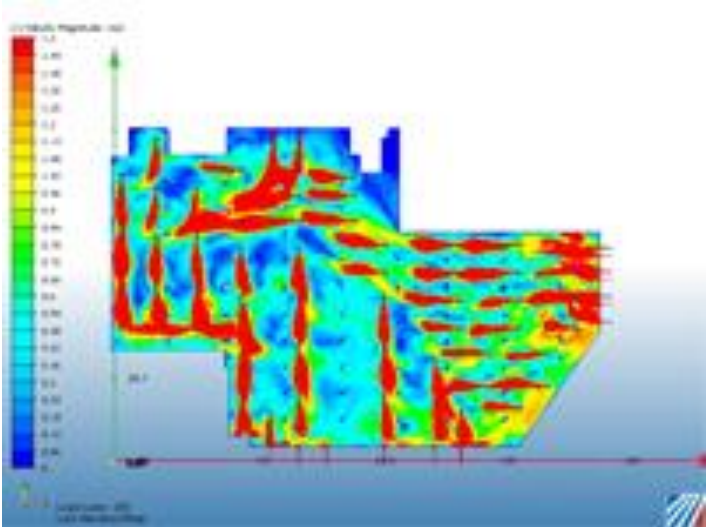
• straight or inclined base • single or double flaps



**SMOKE EXHAUST FANS – ATEX & HI-TEMPERATURE FANS
FIRE PROTECTION VENTILATION SYSTEMS**



CFD ANALYSIS





Air Water Energy Solutions

& Fire Protection

CONTACT US



13A&B, Michalakopoulou Street, 1075, Nicosia, Cyprus
ARIMEC P.O.BOX: 29656, 1722, Nicosia, Cyprus



info@arimec.eu / eshop@arimec.eu



(00357)22460240



(00357)22480198, (00357)22460954



www.arimec.eu



<https://www.facebook.com/arimec.eu/>



<https://www.linkedin.com/company/arimec-trading-ltd/>